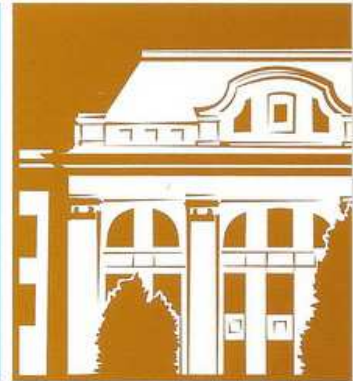


Volume 57 | Number 5 | 2011

ACTA MEDICA MARISIENSIS

OFFICIAL PUBLICATION OF THE
UNIVERSITY OF MEDICINE AND PHARMACY OF TÂRGU MUREȘ



Editorial

No Editorial for a Blurred Window

Original research

A Randomized Trial of Prophylactic Administration of Phenylephrine vs. Ephedrine for Treatment of Hypotension during Combined Spinal-epidural Anesthesia for Cesarean Delivery

fMRI and SAGE Test Evaluation of pre-Mild Cognitive Impairment (pre-MCI)

The Detection of Premalignant Gastric Lesions by Conventional and Magnifying Endoscopy

Modifications of Dental Proprioceptivity After Apicectomy

Case report

Acute Infusion Reaction to Infliximab in a Case of Crohn's Disease with Recto-Scrotal Fistula

Gastric Trichobezoar

Featuring

Anesthesiology

Cardiology

Dental Medicine

Emergency Care

Endocrinology

Gastroenterology

Gynecology

Hematology

Internal Medicine

Neurology

Ophthalmology

Orthopedics

Pediatrics

Pharmacy

Surgery



ISSN-L 2068-3324

ISSN 2068-3324

www.ammjournal.ro

The Presence of Nucleated Red Cells in the Blood of Critical Care Patients is Associated with an Increased Mortality Risk

Duțu Mădălina¹, Negoită S¹, Manolescu Rely¹, Calu V³, Corneci D¹, Georgescu Anca⁵, Togănel Cornelia⁴, Azamfirei L²

¹ Anesthesiology Clinic, Elias Emergency University Hospital, Bucharest, Romania

² Anesthesiology Clinic I, County Emergency Clinical Hospital, Tîrgu Mureș, Romania

³ Surgical Clinic, Elias Emergency University Hospital, Bucharest, Romania

⁴ Department of Oncology, County Emergency Clinical Hospital, Tîrgu Mureș, Romania

⁵ Clinic of Infectious Diseases, University of Medicine and Pharmacy, Tîrgu Mureș, Romania

Background: The occurrence of nucleated red blood cells (NRBCs) in critically ill patients is a consequence of either hypoxic or inflammatory injuries. Therefore erythroblasts' detection may be used as an early indicator of high mortality risk.

Material and methods: In a prospective study the detection of NRBCs was used for daily monitoring of 90 patients for a 3-months term. The prognostic significance of the NRBCs presence was compared with two risk scores: APACHE II and SAPS II.

Results: The incidence of erythroblasts' presence was 20% (18/90). The mortality of NRBC-positive patients was 88.8% (16/18) and was significantly higher ($p < 0.05$) than the mortality of NRBC-negative patients: 30.5% (22/72). The incidence of the erythroblasts in peripheral blood has increased simultaneously with APACHE II and SAPS II scores. On average, NRBCs were detected for the first time 6.5 days before death. The occurrence of NRBCs was not associated with a specific cause of death; however septic patients who died had the highest incidence of NRBCs' presence.

Conclusion: The daily screening of the presence of NRBCs seems to be a useful tool to estimate the mortality risk in critically ill patients, the parameter being of high prognostic strength regarding the mortality risk.

Keywords: nucleated red blood cells, mortality risk, prognostic strength

Introduction

The peripheral blood of healthy adult people is usually free of nucleated red blood cells (NRBCs), the occurrence of these cells in the bloodstream is associated with severe diseases [1] and indicates a relatively poor prognosis [2]. The mechanism of this phenomenon is still unknown, the hypothesis being either of bone marrow stimulation or of bone marrow insufficiency caused by the possible role that cytokines could play in the process [3]. Recent study revealed that the detection of NRBC in blood was associated with increased erythropoietin, IL-3 and IL-6 concentrations. Therefore, the detection of NRBC may be considered a parameter that sums up life-threatening hypoxic and inflammatory injuries [3]. However, since the reticulocyte concentration was increased both in NRBC-positive and NRBC-negative patients, the bone marrow function was obviously not disturbed in these conditions. Beyond the newborn period, the presence of nucleated red blood cells (NRBC) in the blood of adults is pathologic. If detectable, these patients have a relatively poor prognosis.

The concentration of the NRBCs can be determined either macroscopically by a stained peripheral blood smear, or using a more convenient and sensitive technique in the form of mechanized blood analyzers which can routinely measure concentrations of less than 100/ μ l [4].

Materials and methods

Ninety intensive care patients were included in the study, treated between January 1st and March 31, 2009 in the In-

tensive Care Department of Elias Emergency Hospital, Bucharest, Romania. Patients under 18 years of age and surgical patients were excluded from the study. Every morning we yielded a blood sample from every patient from the intensive care unit and we performed automatically blood elements count with Sysmex XE-2100 and a microscopically analyze of a stained peripheral blood smear. If the NRBCs were detected in the blood at least once the patient was defined as NRBC-positive. The in-hospital mortality was considered to be the patient's outcome.

The prognostic significance of NRBCs was evaluated taking in consideration established risk models: the Acute Physiology and Chronic Health Evaluation II (APACHE II) and the Simplified Acute Physiology Score II (SAPS II). The APACHE II severity index includes the following risk factors: body temperature, mean arterial pressure, heart rate, respiratory rate, blood oxygenation, arterial pH, sodium, potassium, creatinine, hematocrit, white blood cell count, Glasgow coma scale, age, and anamnestic data concerning severe organ insufficiency or immunocompromised condition. The SAPS II includes the following risk factors: age, heart rate, systolic blood pressure, body temperature, blood oxygenation, urinary output, urea, white blood cell count, potassium, sodium, bicarbonate, bilirubin, Glasgow coma scale, chronic diseases (that is, malignancies and acquired immunodeficiency syndrome), and type of admission (that is, medical and unscheduled surgical). Both the APACHE II score and the SAPS II are determined from the most altered (worst) physiologic value (for example, the lowest

1 - 96%

Table I. The presence of NRBCs at medical intensive care patients who have died due to various causes

Pathology	No. of patients	No. of deaths
Cardiovascular pathology	2	2
Pulmonary pathology	2	2
Neurological pathology	1	0
Sepsis	7	7
Trauma	5	4
Other	1	1

1 - 96%

blood pressure or the highest white blood cell count) during the initial 24 hours after intensive care unit admission.

Data are presented as the mean ± standard error of mean. A p value of less than 0.05 was considered statistically significant.

2 - 65%

Results

We included 90 medical intensive care patients, 58.7% male, 41.35% female. The mean age was 66.3±0.8 years (range 20 to 92 years). The length of stay in the ICU was on average 7.1±0.3 days. Overall mortality rate was 42.2%. The APACHE II score and the SAPS II amounted to 20.6±0.6 and 44.1±1.2, respectively. The incidence of NRBCs' presence in the blood was 20% (18/90). No significant difference was found between the incidences in male (18.9%) and female (21.5%) patients.

On average, NRBCs were detected for the first time on the third day of intensive care treatment (3.1±0.4; Figure 1).

The mortality of NRBC-positive patients was 88.8% (16/18). In contrast, the mortality of NRBC-negative patients was significantly lower: 30.5% (22/72), (p <0.05).

The occurrence of NRBCs was not associated with a specific cause of death; however septic patients who died had the highest incidence of NRBCs' presence (Table I).

The incidence of NRBCs' presence increased with higher APACHE II and SAPS II scores (Tables II and III). Because the determination of the erythroblasts in the peripheral blood was not quantitative, we could not obtain a correlation with statistical value between the NRBCs concentration and APACHE II and SAPS II scores progression. However, we noticed that the doubling of the number of the erythroblasts per 100 leukocytes correlated with adding 6.8 points to the APACHE II score.

NRBCs were an early indicator of patients with increased mortality risk. In the group of NRBC positive patients who died, NRBCs were detected on average for the first time 6.5 days before death.

Table II. Correlation between the incidence of the NRBCs' presence and APACHE II score

APACHE II	NRBCs Incidence
<11	0% (0/20)
11-20	8% (2/25)
21-30	29% (7/24)
>31	42% (9/21)

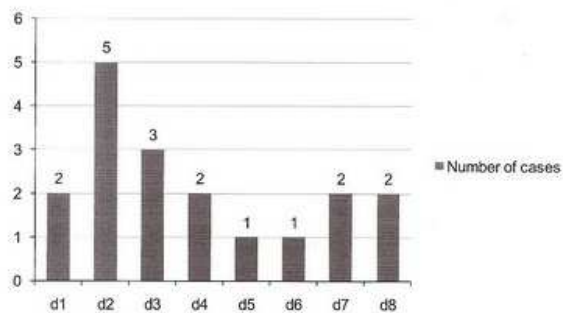


Fig. 1. Intensive care days when nucleated red blood cells were detected for the first time in the blood of medical intensive care patients

3 - 75%

Discussions

In this study the NRBC detection and quantification were based on the microscopic analysis of stained blood smears. This technique is only to some extent suitable for the detection and quantification of NRBC concentrations of less than 200/µl. This is the reason why when comparing with literature's data the mortality of the NRBC-positive patients in our study was higher (88.8% versus 50.75%) [1].

The present study revealed that approximately 20% of all medical intensive care patients were NRBC-positive at least once and at two NRBC-positive patients, NRBCs were detected already on the admission day. Our data confirmed the high prognostic strength of the detection of NRBCs in blood regarding mortality. The total in-hospital mortality of NRBC-positive patients in this study was significantly higher than that of the negative patients.

The study revealed that the daily screening for NRBCs can be used to estimate the patients' mortality risk.

Analyzing the hospital stay at the patients who died showed that NRBCs in blood were found not just immediately before death. Moreover, our present study showed that the detection of NRBCs is often a relatively early phenomenon prior to death. In deceased patients, NRBCs were detected 6.5 days before death. Therefore, NRBCs seems to be an early indicator of increased risk.

There was not found an association with none of the various causes of patients' death in this study. NRBCs may thus be considered a marker that includes hypoxic and inflammatory injuries that occur at critical ill patients and influence the outcome. This could be the reason why the occurrence of NRBCs is a strong predictor of increased mortality.

Table III. Correlation between the incidence of the NRBCs' presence and SAPS II score

SAPS II	NRBCs Incidence
<21	0% (0/18)
21-40	11% (3/27)
41-60	28% (7/25)
>61	40% (8/20)

3 - 75%

Due to the association between inflammation-SIRS, sepsis and NRBCs occurrence, we can speculate that maybe early onset or intensifying the anti-inflammatory therapy or antibiotic administration at NRBC-positive patients can improve their outcome.

Conclusion

NRBC detection in critically ill patients was associated with significantly increased in-hospital mortality. The presence of NRBCs correlates to other risk models like APACHE II and SAPS II. The detection of NRBCs in blood is a relatively early phenomenon prior to death, so screening for NRBCs may aid in the early identification of patients at high risk.

4 - 76%

Acknowledgement

This paper was supported by CNCSIS – UEFISCDI, project number PNII-IDEI code 136/2008.

References

1. Stachon A – Nucleated red blood cells in the blood of medical intensive care patients indicate increased mortality risk: a prospective cohort study. *Critical Care* 2007, 11:R62 (DOI:10.1186/cc5932)
2. Stachon A, Becker A – Re-evaluation of Established Risk Scores by Measurement of Nucleated Red Blood Cells in Blood of Surgical Intensive Care Patients. *Journal of Trauma-Injury Infection & Critical Care* 2008, 65(3): 666-673
3. Stachon A, Bolulu O, Holland-Letz T – Association between nucleated red blood cells in blood and the levels of erythropoietin, interleukin 2, interleukin 6, and interleukin 12p70. *Shock* 2005, 24(1):34-39
4. Stachon A, Sondermann N, Krieg M – Incidence of Nucleated Red Blood Cells in the Blood of Hospitalised Patients. *Infusion Therapy and Transfusion Medicine* 2001;28:263-266 (DOI: 10.1159/000050251)

Noi wit

Filop

Decem
Decem
Decem

Objectiv

water sol
stabiliz
Methods
enocor
in Hucen
Results:
lined by
Conclusi
results an

Keyword

Introdu

Non-ster
of the m
gain reli
class II o
being low
larity of i
therefore
parve the
Ciclo
saccharid
antitrophi
with the i
fame-gues
stances. T
narrow si
groups an
The m
which con
respective
CDs is m
oms. most
CD molec
synthetic d
mainly use
HP-β-CD
er than β-4
There as
Ala.7), rel
or increme
investigate t
molecular n
water per
method. Th

Research

Open Access

Nucleated red blood cells in the blood of medical intensive care patients indicate increased mortality risk: a prospective cohort study

Axel Stachon¹, Elmar Segbers¹, Tim Holland-Letz², Reiner Kempf¹, Steffen Hering³ and Michael Krieg¹

¹Institute of Clinical Chemistry, Transfusion and Laboratory Medicine, BG-University Hospital Bergmannsheil, Buerkle de la Camp-Platz 1, Ruhr-University Bochum, 44789 Bochum, Germany

²Department of Medical Informatics, Biometry, and Epidemiology, Overbergstrasse 17, Ruhr-University Bochum, 44801 Bochum, Germany

³Department of Internal Medicine, BG-University Hospital Bergmannsheil, Buerkle de la Camp-Platz 1, Ruhr-University Bochum, 44789 Bochum, Germany

Corresponding author: Axel Stachon, axel.stachon@ruhr-uni-bochum.de

Received: 23 Mar 2007 Revisions requested: 21 Apr 2007 Revisions received: 3 May 2007 Accepted: 5 Jun 2007 Published: 5 Jun 2007

Critical Care 2007, **11**:R62 (doi:10.1186/cc5932)

This article is online at: <http://ccforum.com/content/11/3/R62>

© 2007 Stachon *et al.*; licensee BioMed Central Ltd.

This is an open access article distributed under the terms of the Creative Commons Attribution License (<http://creativecommons.org/licenses/by/2.0>), which permits unrestricted use, distribution, and reproduction in any medium, provided the original work is properly cited.

Abstract

Introduction In critically ill patients, the appearance of nucleated red blood cells (NRBCs) in blood is associated with a variety of severe diseases. Generally, when NRBCs are detected in the patients' blood, the prognosis is poor.

Methods In a prospective study, the detection of NRBCs was used for a daily monitoring of 383 medical intensive care patients.

Results The incidence of NRBCs in medical intensive care patients was 17.5% (67/383). The mortality of NRBC-positive patients was 50.7% (34/67); this was significantly higher ($p < 0.001$) than the mortality of NRBC-negative patients (9.8%, 31/316). Mortality increased with increasing NRBC concentration. Seventy-eight point six percent of the patients with NRBCs of more than 200/ μ l died. The detection of NRBCs is highly predictive of death, the odds ratio after adjustment for other laboratory and clinical prognostic indicators being 1.987 ($p <$

0.01) for each increase in the NRBC category (0/ μ l, 1 to 100/ μ l, 101 to 200/ μ l, and more than 200/ μ l). Each step-up in the NRBC category increased the mortality risk as much as an increase in APACHE II (Acute Physiology and Chronic Health Evaluation II) score of approximately 4 points. The mortality of patients who were NRBC-positive on the day of relocation from the intensive care unit to a peripheral ward was 27.6% (8/27). This was significantly higher than the mortality of patients who were NRBC-negative on the relocation day (8.6%, 28/325; $p < 0.01$). On average, NRBCs were detected for the first time 14 days (median, 3 days) before death.

Conclusion The routine analysis of NRBCs in blood is of high prognostic power with regard to mortality of critically ill patients. Therefore, this parameter may serve as a daily indicator of patients at high mortality risk. Furthermore, NRBC-positive intensive care patients should not be relocated to a normal ward but should obtain ongoing intensive care treatment.

Introduction

Under normal conditions, the peripheral blood of healthy adults is generally free of nucleated red blood cells (NRBCs), which tend to be found in patients with severe diseases [1-5] who have a relatively poor prognosis [3,4,6-9]. In most of the earlier studies on NRBCs, the concentration was determined microscopically by a stained peripheral blood smear. With such a technique, it is difficult to detect NRBC concentrations of less than 200/ μ l [10]. For several years, a more convenient

and sensitive technique has been available in the form of mechanized blood analyzers. With such an analyzer, one can routinely determine NRBC concentrations of less than 100/ μ l [11-13]. The results of our recent studies with this new technique indicate that the detection of NRBCs may serve as an early indicator in patients at increased risk of mortality: on average, the presence of NRBCs was detected 1 to 3 weeks before death [14,15]. Furthermore, the analysis of the cytokine profile in the blood of NRBC-positive patients (without

APACHE II = Acute Physiology and Chronic Health Evaluation II; NRBC = nucleated red blood cell; SAPS II = Simplified Acute Physiology Score II.

hematologic diseases) suggests that NRBCs may be considered a parameter that sums hypoxic and inflammatory injuries. This may be the reason why the appearance of NRBCs is a strong predictor of increased mortality [15-17].

Recently, we reported on the poor prognosis of surgical intensive care patients when NRBCs are found in the peripheral blood [18]. In that study, for the first time, a systematic day-to-day screening for NRBCs in the blood of surgical intensive care patients was performed. Our study revealed that 32% of the surgical intensive care patients were NRBC-positive at least once. The detection of NRBCs was associated with a greatly increased mortality of 44% (versus 4% of NRBC-negative patients). The area under the curve amounted to 0.86. On average, NRBCs were detected nine days before death. Therefore, in the present study, we set out to establish whether the daily screening for NRBCs in medical intensive care patients could serve as an early indicator of medical intensive care patients at extremely high risk.

Our study revealed that 18% of the medical intensive care patients were NRBC-positive. The detection of NRBCs was associated with a greatly increased in-hospital mortality. More than 50% of the NRBC-positive patients died. Furthermore, the mortality was three times higher in patients who were NRBC-positive on the day of relocation from the intensive care unit to a peripheral ward compared to patients who were NRBC-negative on the relocation day. On average, NRBCs were detected 14 days before death. These results suggest that the routine daily measurement of NRBCs could aid in a daily risk assessment of medical intensive care patients.

Materials and methods

Subjects and protocol

All intensive care patients treated between April 2003 and January 2004 in the intensive care unit of the Department of Internal Medicine of Berufsgenossenschaftliche Universitaetsklinik Bergmannsheil GmbH (University Hospital, Ruhr-University Bochum, Germany) ($n = 383$) were included in this study. Patients younger than 18 years and patients after surgery were excluded from this study. To evaluate the prognostic significance of NRBCs in the peripheral blood of medical intensive care patients, we screened one blood sample of each patient each day by means of a Sysmex XE-2100 (Sysmex Europe GmbH, Norderstedt, Germany). Blood samples were routinely drawn in the morning. For statistical analysis, a patient was defined as NRBC-positive when NRBCs were detected in the blood at least once. Outcome was considered as in-hospital mortality. Ethical approval to conduct this study was granted by the Ethical Committee of Ruhr-University Bochum (reference no. 1982).

Laboratory tests

Blood count parameters (NRBCs, leukocytes, hemoglobin, and thrombocytes) were measured using a Sysmex XE-2100

blood analyzer in line with the manufacturer's recommendations. According to the manufacturer, the NRBC detection limit was greater than $19/\mu\text{l}$. Stringent internal quality control measurements were performed, and the criteria of acceptance were fulfilled throughout.

Creatinine, alanine aminotransferase, and C-reactive protein were measured with an LX 20 analyzer (Beckman Coulter GmbH, Krefeld, Germany), and prothrombin time ratio was assayed with a BCS (Behring Coagulation System) (Dade Behring, Schwalbach, Germany), all in accordance with the recommendations of the manufacturers. The quality assurance of quantitative determinations was strictly performed according to the German Norm: Quality Assurance in Medical Laboratories (DIN [Deutsches Institut für Normung] 58936, 2000). The criteria of acceptance were fulfilled throughout. Retrospective analysis of the laboratory data revealed 0.3% missing values.

Statistical analysis

Data are presented as the mean \pm standard error of mean. When samples were normally distributed, the differences between the data for survivors and deceased were analyzed using the *t* test procedure. When samples were not normally distributed, the Mann-Whitney test was used because this test does not require a normal distribution of data. In the case of categorical data, the Fisher exact test was used. Correlations were analyzed by Pearson or non-parametric Spearman correlation. A *p* value of less than 0.05 was considered statistically significant.

A receiver operating characteristic curve was obtained by plotting the true-positive proportion (sensitivity) against the false-negative proportion ($1 - \text{specificity}$). The area under the curve (C-statistics) was calculated by non-linear regression.

The prognostic significance of NRBCs and other risk indicators was assessed using multiple logistic regression. In this study, the logistic regression tries to estimate the relative effect that parameters have on the patients' outcome. This is facilitated by assuming a functional relationship (the 'logistic model') between variables and probability of outcome. Then, for all possible settings, every variable is given a relative importance that makes the actual observed event 'most likely', taking into account the effects of all other variables. This is called the 'maximum likelihood' estimate of the variables' influence. These coefficients provide a relative weighting for each variable. Moreover, they can be used to derive odds ratios for the variables. If the odds ratio differs significantly from 1, a significant prognostic power that is independent of the other variables considered may be assumed.

In a first step, laboratory data were analyzed with regard to mortality. If reasonable for calculation of the odds ratios, the data were categorized in up to four categories. That is, NRBCs

were subdivided into four categories: 0/ μ l, 1 to 100/ μ l, 101 to 200/ μ l, and more than 200/ μ l. A backward selection multiple logistic regression analysis was performed by first including all parameters in a multivariate model and subsequently leaving out the parameters with the largest *p* values until no parameter with a *p* value greater than 0.25 was included. The calculations were carried out using SAS version 8.02 (SAS Institute Inc., Cary, NC, USA). The intention of this study was to evaluate the prognostic power of the presence of NRBCs in the blood with regard to the patients' in-hospital mortality risk.

Nucleated red blood cells and established risk models for intensive care patients

The prognostic significance of NRBCs was evaluated under consideration of established risk models: the Acute Physiology and Chronic Health Evaluation II (APACHE II) (first evaluated in 1985 [19]) and the Simplified Acute Physiology Score II (SAPS II) (first evaluated in 1993 [20]). The APACHE II severity index includes the following risk factors: body temperature, mean arterial pressure, heart rate, respiratory rate, blood oxygenation, arterial pH, sodium, potassium, creatinine, hematocrit, white blood cell count, Glasgow coma scale, age, and anamnestic data concerning severe organ insufficiency or immunocompromised states of health. The SAPS II considers the following risk factors: age, heart rate, systolic blood pressure, body temperature, blood oxygenation, urinary output, urea, white blood cell count, potassium, sodium, bicarbonate, bilirubin, Glasgow coma scale, chronic diseases (that is, malignancies and acquired immunodeficiency syndrome), and type of admission (that is, medical and unscheduled surgical). Both the APACHE II score and the SAPS II are determined from the most deranged (worst) physiologic value (for example, the lowest blood pressure or the highest white blood cell count) during the initial 24 hours after intensive care unit admission.

1 - 96%

Results

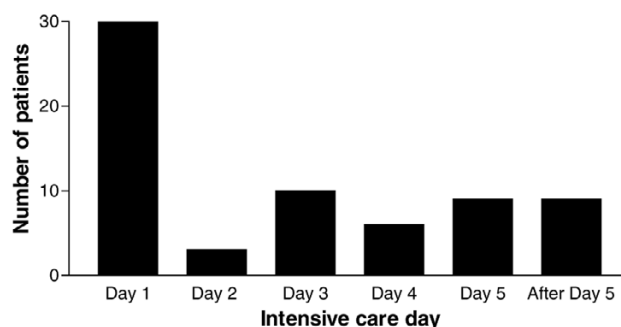
Patient characteristics

We included 383 medical intensive care patients. The mean age was 66.3 ± 0.8 years (range, 20 to 94 years). Two hundred twenty-five male (58.7%) and 158 female (41.3%) patients were included in this study. On average, patients were treated for 4.1 ± 0.3 days ($n = 383$) in the intensive care unit. Total mortality was 17.0% (65/383). The APACHE II score and the SAPS II amounted to 16.0 ± 0.5 and 35.2 ± 0.9 , respectively.

The incidence of NRBCs in the blood was 17.5% (67/383). No significant difference was found between the incidences in male (16.4%, 37/225) and female (19.0%, 30/158) patients. On the day of admission, 7.8% (30/383) of the patients were NRBC-positive. On average, NRBCs were detected for the first time on the third day of intensive care treatment (3.1 ± 0.4 ; Figure 1), but in 44.8% (30/67) of the NRBC-positive patients, NRBCs were already detected on the admission day.

2 - 65%

Figure 1



Intensive care days on which nucleated red blood cells were detected for the first time in the blood of medical intensive care patients.

On average, the highest NRBC concentration of each individual NRBC-positive patient was $189 \pm 41/\mu$ l (range, 20 to 1,760/ μ l; median, 80/ μ l; $n = 67$). Some of the basal clinical characteristics of NRBC-positive and NRBC-negative patients are summarized in Table 1.

Prognostic significance of nucleated red blood cells

The mortality of NRBC-positive patients was 50.7% (34/67). The predictive value for death increased with higher NRBC concentrations (Figure 2). The mortality was 46.7% (14/30) in patients who were NRBC-positive on the day of admission to the intensive care unit. In contrast, the mortality of NRBC-negative patients was 9.8% (31/316; $p < 0.001$).

Furthermore, the mortality of patients who were NRBC-positive on the day of relocation from the intensive care unit to a peripheral ward was 27.6% (8/27). This was significantly higher than the mortality of patients who were NRBC-negative on the relocation day (8.6%, 28/325; $p < 0.01$).

Overall, with regard to in-hospital mortality, NRBCs in blood showed sensitivity and specificity of 52.3% and 89.6%, respectively. The area under the curve was 0.72.

NRBCs were an early indicator of patients at increased mortality risk. On average, in NRBC-positive patients who died, NRBCs were detected for the first time 13.6 ± 3.8 days (median, 3 days; $n = 34$) before death.

After the first detection of NRBCs in blood and during the further course of intensive care treatment, when the NRBCs have disappeared from the circulation, the mortality again decreased. That is, when former NRBC-positive patients were again NRBC-negative for more than 4 days after the final detection of NRBCs in blood, the mortality decreased to 16.7% (1/6).

As shown in Figure 3, the appearance of NRBCs in blood seems not to be associated with one particular cause of death. However, patients who have died from infections or sepsis, in

Table 1**Clinical data and main diagnosis of treatment of NRBC-positive (*n* = 67) and NRBC-negative (*n* = 316) patients**

Parameter	NRBC-positive	NRBC-negative	<i>P</i>
Age, years	68 ± 2	66 ± 1	n.s.
Gender, male/female	55%/45%	59%/41%	n.s.
Intensive care treatment, days	8.7 ± 1.2	3.2 ± 0.2	< 0.001
Body mass index	27.8 ± 0.9	26.5 ± 0.3	n.s.
Mortality	50.7%	9.8%	< 0.001
APACHE II score points	21.5	14.9	< 0.001
SAPS II points	47.5	32.6	< 0.001
Acute coronary syndrome/AMI	16.4% (<i>n</i> = 11)	38.0% (<i>n</i> = 120)	< 0.001
Cardiac arrhythmia	10.4% (<i>n</i> = 7)	14.2% (<i>n</i> = 45)	n.s.
Cardiac insufficiency	11.9% (<i>n</i> = 8)	6.6% (<i>n</i> = 21)	n.s.
Pulmonary diseases	23.9% (<i>n</i> = 16)	8.9% (<i>n</i> = 28)	< 0.01
Gastrointestinal diseases	16.4% (<i>n</i> = 11)	7.9% (<i>n</i> = 25)	< 0.05
Cerebral diseases	6.0% (<i>n</i> = 4)	10.1% (<i>n</i> = 32)	n.s.
Toxication	4.5% (<i>n</i> = 3)	4.1% (<i>n</i> = 13)	n.s.
Metabolic diseases	1.5% (<i>n</i> = 1)	4.4% (<i>n</i> = 14)	n.s.
Other diagnosis	9.0% (<i>n</i> = 6)	5.7% (<i>n</i> = 18)	n.s.

AMI, acute myocardial infarction; APACHE II, Acute Physiology and Chronic Health Evaluation II; NRBC, nucleated red blood cell; n.s., not significant; SAPS II, Simplified Acute Physiology Score II.

particular, had significantly higher NRBC concentrations than patients who have died from cerebral or pulmonary complications. None of the other defined causes of death was associated with an NRBC concentration that was significantly higher than the others.

Nucleated red blood cells in relation to other clinical and laboratory risk indicators

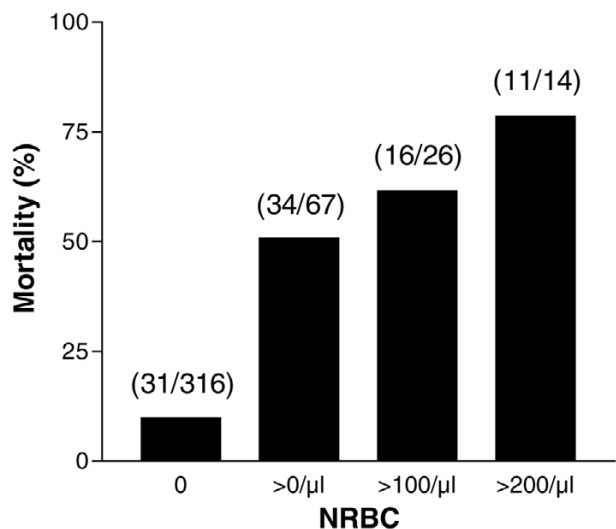
The incidence of NRBCs increased with higher APACHE II and SAPS II scores (Table 2). Accordingly, the Spearman correlation revealed a significant correlation between the NRBC concentration and the APACHE II ($r = 0.292$, $p < 0.001$) and the SAPS II scores ($r = 0.320$, $p < 0.001$). **2 - 65%**

The Spearman correlation of the NRBCs with other laboratory parameters is displayed in Table 3. When correlation was calculated with values measured on the day of the first appearance of NRBCs in blood, NRBCs significantly increased with the leukocytes ($r = 0.373$, $p < 0.01$) and the creatinine concentration ($r = 0.284$, $p < 0.05$). Moreover, NRBCs increased with a decreasing prothrombin time ratio ($r = -0.408$, $p < 0.001$). The concentrations of hemoglobin, thrombocytes, and C-reactive protein as well as the alanine aminotransferase activity were not significantly correlated with the NRBC concentration.

The detection of NRBCs was an independent risk indicator of poor outcome. In terms of mortality, the odds ratio for each stepwise increase in the NRBC categories was calculated in relation to other clinical and laboratory risk indicators by means of multiple logistic regression (Table 4). Because the correlation coefficient calculated by linear regression between APACHE II score and SAPS II was $r = 0.91$, only the APACHE II score was considered for the multiple logistic regression. The detection of NRBCs is highly predictive of death, the odds ratio after adjustment for other clinical and laboratory prognostic indicators being 1.987 ($p < 0.01$) for each increase in the NRBC category (0/ μ l, 1 to 100/ μ l, 101 to 200/ μ l, and more than 200/ μ l). That is, patients with more than 200/ μ l NRBCs had a more than seven-fold higher risk of dying than patients without NRBCs.

Furthermore, under consideration of the APACHE II score, the 'maximum likelihood estimate' for each increase in the NRBC category was 0.687 ± 0.253 and therefore approximately four times (exactly 4.40 times) higher than the 'maximum likelihood estimate' for each one-point increase in the APACHE II score (0.156 ± 0.025). Therefore, each step-up in the NRBC category is equivalent to approximately 4 APACHE II score points. Consequently, an adjustment of the APACHE II score could be performed by adding those 4, 8, or 12 points dependent on

Figure 2



In-hospital mortality of medical intensive care patients in relation to the concentration of nucleated red blood cells (NRBCs) in the blood. Numbers in parenthesis denote the ratio of deceased patients to all patients with the respective NRBC concentration.

the patient's NRBC category (1 to 100, 101 to 200, and more than 200/μl) to the individual APACHE II score of NRBC-positive patients. In practice, this modification would be a reassessment of the patient's prognosis. The area under the curve for this modified APACHE II score was 0.91 compared to 0.87 and 0.72 for the APACHE II score and the NRBCs alone, respectively (Table 5).

Discussion

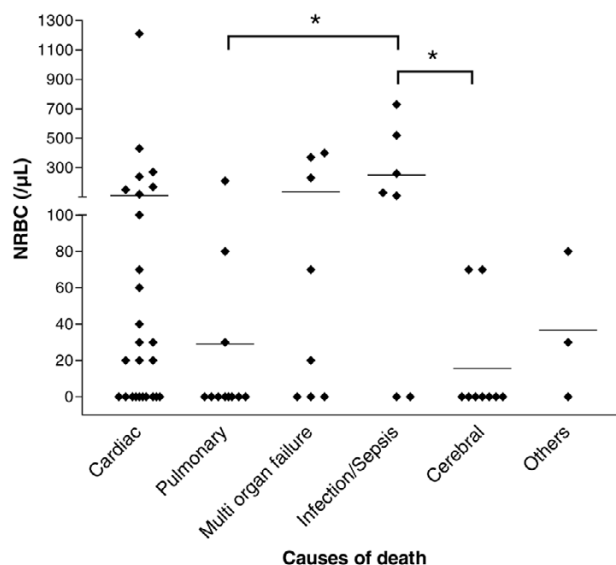
To our knowledge, this is the first study in which the detection of NRBCs in the peripheral blood was investigated with regard to its prognostic significance for the intensive care mortality of medical intensive care patients. In earlier studies, we and others have shown that the detection of NRBCs is associated with a relatively poor prognosis [3,4,6-8,10,14,21,22]. In most of those studies, the NRBC detection and quantification were based on the microscopic analysis of stained blood smears. This technique is time-consuming and only partly suitable for the detection and quantification of NRBC concentrations of less than 200/μl [10].

In this study, the NRBC concentration was screened with a mechanized blood analyzer of high sensitivity [11,12,23]. The present study revealed that approximately 18% of all medical intensive care patients were NRBC-positive at least once. Interestingly, in nearly half of the NRBC-positive patients, NRBCs were detected already on the admission day.

Our data confirmed the high prognostic power of the mechanized detection of NRBCs in blood in terms of mortality. The total in-hospital mortality of NRBC-positive patients of this

3 - 75%

Figure 3



Concentration of nucleated red blood cells (NRBCs) in the blood of medical intensive care patients who have died from various causes. ♦ indicate the NRBC concentration of each individual deceased patient. The average concentration is indicated by horizontal bars. * denote the significance of the difference.

study was 50.7%. Furthermore, as shown in earlier studies, the present data showed that the mortality increased with an increasing NRBC concentration [10,24,25] Approximately 80% of the patients with NRBC concentrations higher than 200/μl died.

3 - 75%

Our study revealed that the daily screening for NRBCs can be used to estimate the patients' mortality risk. Not only did the predictive value for death increase with the concentration of NRBCs in the blood, but the prognosis improved when the NRBC concentration decreased. In particular, after the first detection of NRBCs in blood and during the further course of intensive care treatment, when the NRBCs have disappeared from the circulation for more than four days, the mortality again significantly decreased nearly to values of NRBC-negative patients [18].

In the present study, increased creatinine and leukocyte concentrations and a lower prothrombin time ratio were significantly correlated with increased NRBC concentrations. Although these findings suggest that NRBC-positive patients are more severely burdened than NRBC-negative patients, the detection of NRBCs is an independent predictor of poor outcome. To evaluate the independent attributable risk factor, a logistic regression considering NRBCs, age, gender, body mass index, APACHE II score, creatinine, hemoglobin, thrombocytes, leukocyte, alanine aminotransferase, C-reactive protein, and the prothrombin time ratio was performed. As a result, the independent prognostic power of NRBCs is under-

Table 2

Incidence of NRBCs in blood in medical intensive care patients in relation to the APACHE II and the SAPS II

Risk model	Score range of risk model	Incidence of NRBCs
APACHE II	< 11	4.7% (6/127)
	11–20	18.4% (28/152)
	21–30	30.6% (22/72)
	> 30	34.4% (11/32)
SAPS II	< 21	5.6% (4/71)
	21–40	13.3% (27/203)
	41–60	34.3% (23/67)
	> 60	30.9% (13/42)

APACHE II, Acute Physiology and Chronic Health Evaluation II; NRBC, nucleated red blood cell; SAPS II, Simplified Acute Physiology Score II.

lined by an odds ratio of 1.987 for each stepwise increase in the NRBC category. That is, patients with NRBCs of more than 200/ μ l have a more than seven-fold higher risk to die than NRBC-negative patients. In recent studies, we have already demonstrated that the detection of NRBCs is a risk indicator that is independent of several other established risk indicators [10,14,16,24].

Among the general severity of illness scoring systems for intensive care patients, APACHE II and SAPS II have become two of the most accepted and used [26-30]. However, the present data suggest that the APACHE II score could be significantly improved by adding up to 12 score points, considering the presence of NRBCs as an independent variable in this score, as suggested for the abbreviated burn severity index in patients with burns [25].

The analysis of the lifespan of the patients who died indicates that NRBCs in blood were found not just immediately before death. Moreover, our present study showed that the detection of NRBCs is often a relatively early phenomenon prior to death. In deceased patients, NRBCs were detected 14 days before death. Therefore, NRBCs would seem to be an early indicator of increased risk.

3 - 75%

Finally, the underlying pathophysiology of NRBCs in blood is not fully understood. In our study, no association with only one of the various causes of patient death was found. However, some authors have claimed that hypoxemia [31,32], acute and chronic anemia [33,34], or severe infections [35,36] are linked to the appearance of NRBCs in critically ill patients. In this context, we recently reported on the cytokine profile and the erythropoietin concentrations in NRBC-positive patients [17]. Our data suggested an important role of inflammation and/or decreased tissue oxygenation (caused by local or systemic cir-

Table 3

Spearman correlation of the nucleated red blood cell concentration with other laboratory parameters (n = 67)

Parameter	r	P
Hemoglobin	-0.113	n.s.
Leucocytes	0.373	< 0.01
Thrombocytes	-0.152	n.s.
Creatinine	0.284	< 0.05
Prothrombin time ratio	-0.408	< 0.001
Alanine aminotransferase	0.172	n.s.
C-reactive protein	0.169	n.s.

Correlation was calculated with values measured on the day of the first appearance of nucleated red blood cells in blood. n.s., not significant.

culatory disorders) for the appearance of NRBCs in blood.

NRBCs may thus be considered a marker that sums up hypoxic and inflammatory injuries. It seems obvious that these complications have an impact on patient prognosis. Therefore, this could be the reason why the appearance of NRBCs is a strong predictor of increased mortality.

However, concerning such an association between inflammation (with or without hypoxia) and NRBCs, it is attractive to speculate what kind of therapy could improve the poor prognosis of NRBC-positive patients. Currently, studies are under way in our university hospital to show whether intensifying the treatment of patients with NRBCs (that is, an earlier administration of antibiotics or an anti-inflammatory therapy) can reduce their mortality rate.

3 - 75%

Nonetheless, we observed that the mortality was three times higher in patients who were NRBC-positive on the day of relocation from the intensive care unit to a normal ward compared to patients who were NRBC-negative on the relocation day. Consequently, it seems obvious that NRBC-positive patients should obtain ongoing intensive care treatment.

Conclusion

This is the first study in which the daily screening for NRBCs in the peripheral blood of patients in the medical intensive care unit was investigated with regard to its prognostic power for in-hospital mortality. The incidence of NRBC-positive patients

was 18%. NRBC detection in critically ill patients was associated with significantly increased in-hospital mortality (50.7% versus 9.8%). The predictive value for death increased with the NRBC concentration and seems to decline again when the NRBCs have disappeared from the circulation. The prognostic significance of NRBCs was independent of other laboratory and clinical risk parameters. An improvement of established risk models like APACHE II seems feasible. Furthermore, the detection of NRBCs in blood is a relatively early phenomenon prior to death, so screening for NRBCs may aid in the early

4 - 76%

Table 4**Multivariate odds ratio estimates of clinical and laboratory risk indicators for in-hospital mortality calculated by logistic regression (n = 383)**

Parameter	Point estimate	95% confidence limits	P
NRBCs ^a	1.987	1.211–3.261	< 0.01
Leukocytes (> 10/nl)	0.480	0.178–1.294	0.147
Prothrombin time ratio (< 60%)	3.968	1.733–9.090	< 0.01
Alanine aminotransferase ^b	1.223	0.932–1.620	0.162
C-reactive protein ^c	1.214	0.901–1.635	0.202
APACHE II	1.168	1.112–1.227	< 0.001

Age, gender, body mass index, APACHE II score, the highest nucleated red blood cell (NRBC) concentration, the highest creatinine concentration, the lowest hemoglobin concentration, the lowest thrombocytes concentration, the highest leukocyte concentration, the highest alanine aminotransferase activity, the highest C-reactive protein concentration, and the lowest prothrombin time ratio were considered for the calculation. All risk indicators with *p* values greater than 0.25 were removed from the model. ^aSubdivided into four categories (0/ μ l, 1 to 100/ μ l, 101 to 200/ μ l, and more than 200/ μ l); odds ratio was calculated for each stepwise increase in the category. ^bAfter log transformation. ^cSubdivided into four categories (0 to 5.0 mg/dl, 5.1 to 10.0 mg/dl, 10.1 to 15.0 mg/dl, and more than 15 mg/dl); odds ratio was calculated for each stepwise increase in the category. APACHE II, Acute Physiology and Chronic Health Evaluation II.

Table 5**C-statistics for several risk indicators for in-hospital mortality of medical intensive care patients**

Parameter	Area under curve
NRBC, highest value	0.72
Leukocytes, highest value	0.61
Prothrombin time ratio, lowest value	0.73
Alanine aminotransferase, highest value	0.73
C-reactive protein, highest value	0.72
SAPS II, on admission	0.88
APACHE II, on admission	0.87
APACHE II, on admission + NRBC, highest value ^a	0.91

Only data from the intensive care unit were considered. ^aThe APACHE II score was incremented under consideration of the NRBC concentration as follows: NRBC 0/ μ l: +0, NRBCs 1 to 100/ μ l: +4, NRBCs 101 to 200/ μ l: +8, NRBCs more than 200/ μ l: +12). APACHE II, Acute Physiology and Chronic Health Evaluation II; NRBC, nucleated red blood cell; SAPS II, Simplified Acute Physiology Score II.

4 - 76% Identification of patients at high risk. Further studies are needed to clarify whether the detection of NRBCs could help to decide on a change of patient management, but our present data suggest that NRBC-positive patients should obtain ongoing intensive care treatment.

Key messages

- The detection of NRBCs in the blood of medical intensive care patients is associated with significantly increased in-hospital mortality (50.7% versus 9.8%). The prognostic significance of NRBCs was independent of other laboratory and clinical risk parameters. The predictive value for death increased with the NRBC concentration and seems to decline again when the NRBCs have disappeared from the circulation.
- Our present data suggest that NRBC-positive patients should obtain ongoing intensive care treatment.

Competing interests

AS and RK obtained a grant from Sysmex Europe GmbH (Norderstedt, Germany) to perform this study. The other authors declare that they have no competing interests.

Authors' contributions

All authors made substantive intellectual contributions to the design and conception of this study. AS was responsible for data acquisition and data presentation, performed the analysis and interpretation of data, and was responsible for the writing of the manuscript. RK and ES were responsible for data acquisition and data presentation and performed the analysis and interpretation of data. SH was responsible for data acquisition and data presentation. TH-L performed the analysis and interpretation of data. MK was responsible for the writing of the manuscript. All authors read and approved the final manuscript.

References

- Budmiger H, Graf C, Streuli RA: [The leukoerythroblastic blood picture. Incidence and clinical significance]. *Schweiz Rundsch Med Prax* 1984, **73**:1489-1493.
- Mettier SR: Hematologic aspects of space consuming lesions of the bone marrow (myelophthisic anemia). *Ann Intern Med* 1940, **14**:436-448.
- Schwartz SO, Stansbury F: Significance of nucleated red blood cells in peripheral blood; analysis of 1,496 cases. *J Am Med Assoc* 1954, **154**:1339-1340.
- Delsol G, Guiu-Godfrin B, Guiu M, Pris J, Corberand J, Fabre J: Leukoerythroblastosis and cancer frequency, prognosis, and physiopathologic significance. *Cancer* 1979, **44**:1009-1013.
- Weick JK, Hagedorn AB, Linman JW: Leukoerythroblastosis. *Mayo Clin Proc* 1974, **49**:110-113.
- Tavassoli M: Erythroblastemia. *West J Med* 1975, **122**:194-198.
- Andres WA: Normoblastemia after thermal injury. *Am J Surg* 1976, **131**:725-726.
- Böning A, Stachon A, Weisser H, Krismann M, Skipka G, Laczkovics A, Krieg M: Postoperative cholesterol and erythroblasts as a parameter of perioperative mortality after cardiothoracic surgery. *Z Herz-Thorax-Gefäßchir* 2001, **15**:242-248.
- Otsubo H, Kaito K, Asai O, Usui N, Kobayashi M, Hoshi Y: Persistent nucleated red blood cells in peripheral blood is a poor prognostic factor in patients undergoing stem cell transplantation. *Clin Lab Haematol* 2005, **27**:242-246.
- Stachon A, Böning A, Krismann M, Weisser H, Laczkovics A, Skipka G, Krieg M: Prognostic significance of erythroblasts in blood after cardiothoracic surgery. *Clin Chem Lab Med* 2001, **39**:239-243.
- Briggs C, Harrison P, Grant D, Staves J, Machin SJ: New quantitative parameters on a recently introduced automated blood cell counter – the XE 2100. *Clin Lab Haematol* 2000, **22**:345-350.
- Walters J, Garrity P: Performance evaluation of the Sysmex XE-2100 hematology analyser. *Lab Hematol* 2000, **6**:83-92.
- Stachon A, Sondermann N, Krieg M: Incidence of nucleated red blood cells in the blood of hospitalised patients. *Infusion Ther Transfus Med* 2001, **28**:263-266.
- Stachon A, Sondermann N, Imöhl M, Krieg M: Nucleated red blood cells indicate high risk for in-hospital mortality. *J Lab Clin Med* 2002, **140**:407-412.
- Stachon A, Holland-Letz T, Kempf R, Becker A, Friese J, Krieg M: Poor prognosis indicated by nucleated red blood cells in peripheral blood is not associated with organ failure of the liver or kidney. *Clin Chem Lab Med* 2006, **44**:955-961.
- Stachon A, Eisenblätter K, Köller M, Holland-Letz T, Krieg M: Cytokines and erythropoietin in the blood of patients with erythroblastemia. *Acta Haematol* 2003, **110**:204-206.
- Stachon A, Bolulu O, Holland-Letz T, Krieg M: Association between nucleated red blood cells in blood and the levels of erythropoietin, interleukin-3, interleukin-6, and interleukin-12p70. *Shock* 2005, **24**:34-39.
- Stachon A, Kempf R, Holland-Letz T, Friese J, Becker A, Krieg M: Daily monitoring of nucleated red blood cells in the blood of surgical intensive care patients. *Clin Chim Acta* 2006, **366**:329-335.
- Knaus WA, Draper EA, Wagner DP, Zimmerman JE: APACHE II: a severity of disease classification system. *Crit Care Med* 1985, **13**:818-829.
- Le Gall JR, Lemeshow S, Saulnier F: A new simplified acute physiology score (SAPS II) based on a European/North American multicenter study. *JAMA* 1993, **270**:2957-2963.
- Lehnhardt M, Katzy Y, Langer S, Druecke D, Homann HH, Steinstraesser L, Steinau HU, Krieg M: Prognostic significance of erythroblasts in burns. *Plast Reconstr Surg* 2005, **115**:120-127.
- West CD, Ley AB, Pearson OH: Myelophthisic anemia in cancer of the breast. *Am J Med* 1955, **18**:923-931.
- Ruzicka K, Veitl M, Thalhammer-Scherrer R, Schwarzwinger I: The new hematology analyzer Sysmex XE-2100: performance evaluation of a novel white blood cell differential technology. *Arch Pathol Lab Med* 2001, **125**:391-396.
- Stachon A, Holland-Letz T, Krieg M: High in-hospital mortality of intensive care patients with nucleated red blood cells in blood. *Clin Chem Lab Med* 2004, **42**:933-938.
- Stachon A, Lehnhardt M, Katzy Y, Holland-Letz T, Steinau HU, Krieg M: Making the case for adapting the abbreviated burn severity index to include erythroblast count. *J Wound Care* 2005, **14**:97-100.
- Rosenberg AL: Recent innovations in intensive care unit risk-prediction models. *Curr Opin Crit Care* 2002, **8**:321-330.
- Morgenthaler NG, Struck J, Christ-Crain M, Bergmann A, Müller B: Pro-atrial natriuretic peptide is a prognostic marker in sepsis, similar to the APACHE II score: an observational study. *Crit Care* 2005, **9**:R37-R45.
- Schetz MR, Van den Berghe G: Do we have reliable biochemical markers to predict the outcome of critical illness? *Int J Artif Organs* 2005, **28**:1197-1210.
- Ratanarat R, Thanakittiwirun M, Vilaichone W, Thongyoo S, Permpikul C: Prediction of mortality by using the standard score systems in a medical intensive care unit in thailand. *J Med Assoc Thai* 2005, **88**:949-955.
- Herbert PC, Wells G, Blajchman MA, Marshall J, Marin C, Pagliarello G, Tweeddale M, Schweitzer I, Yetisir E: A multicenter, randomized, controlled clinical trial of transfusion requirements in critical care. Transfusion Requirements in Critical Care Investigators, Canadian Critical Care Trials Group. *N Engl J Med* 1999, **340**:409-417.
- Ward HP, Holman J: The association of nucleated red cells in the peripheral smear with hypoxemia. *Ann Intern Med* 1967, **67**:1190-1194.
- Burkett LL, Cox ML, Fields ML: Leukoerythroblastosis in the adult. *Am J Clin Pathol* 1965, **44**:494-498.
- Clifford GO: The clinical significance of leukoerythroblastic anemia. *Med Clin North Am* 1966, **50**:779-790.
- Vaughan JM, Oxon DM: Leuco-erythroblastic anaemia. *J Pathol* 1936, **42**:541-563.
- Okpara RA: The prognostic significance of leukoerythroblastic anaemia in Nigerians. *East Afr Med J* 1985, **62**:185-188.
- Retief FP: Leuco-erythroblastosis in the adult. *Lancet* 1964, **1**:639-642.